



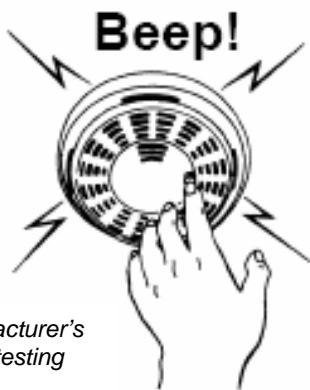
Early Warning and Escape – Smoke Detectors

Many fire deaths and fire injuries are actually caused by smoke and gases. Victims inhale smoke and poisonous gases that rise ahead of the flames. Survival depends on being warned as early as possible and having an escape plan. When reviewing the smoke detector installation for your home you should be able to respond “yes” to the following statements.

SMOKE DETECTORS

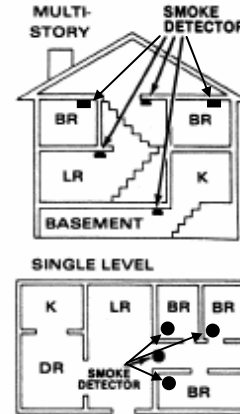
	<u>Yes</u>	<u>No</u>
1. At least one smoke detector is located on every floor of my home and in each of the bedrooms.	_____	_____
2. Smoke detectors are placed either on the ceiling or 6-12 inches below the ceiling on the wall.	_____	_____
3. Smoke detectors are tested according to manufacturer’s instructions on a regular basis (at least once a month) and are kept in working condition at all times.	_____	_____
4. Batteries are replaced according to manufacturer’s instructions, at least annually.	_____	_____
5. Batteries are never disconnected.	_____	_____
6. The detector has a distinct warning signal that can be heard whether asleep or awake.	_____	_____

TEST YOUR DETECTOR MONTHLY



Follow manufacturer’s directions for testing the detector.

PLACE ONE DETECTOR ON EVERY FLOOR AND IN EACH BEDROOM



Make sure detectors are placed either on the ceiling or 6-12 inches below the ceiling on the wall. Locate smoke detectors away from air vents or registers; high air flow or “dead” spots are to be avoided.

RECOMMENDATIONS

- ❖ Purchase a smoke detector if you do not have one. Smoke detectors are inexpensive and are required by law in many localities. Check local codes and regulations before you buy your smoke detector because some codes require specific types of detectors. They provide an early warning which is critical because the longer the delay, the deadlier the consequences.
- ❖ Read the instructions that come with the detector for advice on the best place to install it. As a minimum detectors should be located in each bedroom and one on every floor.
- ❖ Follow the manufacturer’s instructions for proper maintenance. Smoke detectors can save lives, but only if properly installed and maintained.
- ❖ Never disconnect a detector. Consider relocating the detector rather than disconnecting it if it is subject to nuisance alarms, e.g. from cooking.
- ❖ Replace the battery annually, or when a “chirping” sound is heard.
- ❖ Follow the manufacturer’s instructions about cleaning your detector. Excessive dust, grease or other material in the detector may cause it to operate abnormally. Vacuum the grill work of your detector.